



Server Management

Resource Athlete®

※ALog ConVerter, Resource Athlete is a registered trademark of Amiya Corporation.

※Names of companies and products appeared in this document are trademarks or common law marks of each company.

※Design and function of products written in this document are subject to change without notice. ◦



ALog ConVerter.

- Acquires server access from layers of Operation System (OS)
- Integrated log management system of multiple servers

Enterprise type



Resource Athlete.

- Multifunctional server management tool
- EX) Identifying access permission information of particular folders, eliminating unnecessary files, etc.



ALog ConVerter. DB

- Acquires log from the database application layers
- Stores scattered database logs as a unified data



ALog EVA

- Expands the domain of ALog protection
- Unifying log product



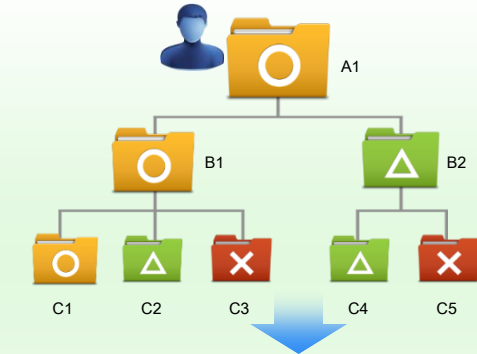
Resource Athlete®



Resource Athlete is a total server management tool which enables to see various types of information such as **folder access rights management** or **unnecessary or needlessly large files**, and to create automatic reports.



Folder Access Rights Management

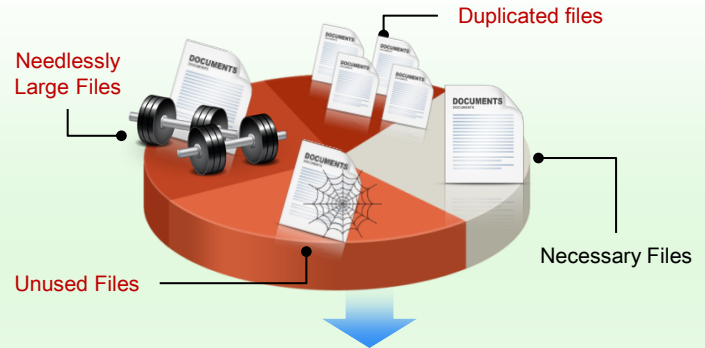


Folders Accessible by Employee A

	A1,B1,C1	Read & Write
	B2,C2,C4	Read Only
	C3,C5	No Access



Asset Management of File Resource



Files Not Opened for 3+ Years

	NewYearsParty.jpg	2014/03/01
	Quote_ABC_Securities.xls	2014/06/27
	Presentation.ppt	2015/09/26

[Resource Athlete Basic Management]



Folder Access Rights Management

- Access to all or specific folders
- Folders not inheriting rights of parent folders
- Folders accessible to specific users
- Folders with changed access rights
- Shared folders



File Resource Management

- Files over a certain size
- Files unused for a long period of time
- Duplicated files
- Files with specific extensions
- Server, process, and other inventory information

[Resource Athlete Optional Management]



User Account Management

- Accounts with administrative rights
- Unused accounts
- Accounts with unchanged passwords
- Group and group users
- PC inventory information

POINT!

Set conditions!!
ex: Folders over 20GB with more than 3 hierarchical layers.
ex: Files not read for more than 5 years.

POINT!

Using account licenses allows integrated management of domain/work group account information and PC inventory information.

Access to all or specific folders

Machine Name	Folder Name	Account	Allowed Type
File_Server	c: SalesDept Customer List Purchases List	AMIYA.co.jp sales_dept	Full Control
		AMIYA.co.jp engineering_dept	Read and Execute
File_Server	c: FinanceDept CashFlow(confidential)	AMIYA.co.jp everyone	Full Control
		AMIYA.co.jp board	Full Control

POINT!



Resource Athlete can limitedly output changes from the last report.
It's also useful to manage current status of changes.

Folders Accessible to Specific Users

Account	Folder Name	Allowed Type
AMIYA.co.jp Johnson	c: ABC_Securities SalesGroup3 Client_Proposal(confidential)	Read and Execute
AMIYA.co.jp Johnson	c: ABC_Securities FinanceSection HeavyDebtList(confidential)	Write
AMIYA.co.jp Johnson	c: ABC_Securities FinanceSection HeavyDebtList(confidential)	Read and Execute

POINT!



To list-up accessible folders based on users is a quite hard work without specific tools!

■ Unused Files

Domain Name	Machine Name	Folder Name	Owner	Most-Recent Access
AMIYA.co.jp	AFile_Server	netapp-vol2 client_info2014.xls	AMIYA.co.jp smith	2015-09-18 11:30:33
AMIYA.co.jp	BFile_Server	ABC1 netapp-vol5 org_chart.ppt	AMIYA.co.jp director	2014-10-05 15:20:21
AMIYA.co.jp	CFile_Server	SalesDept fredericks xmas-party-photo32.img	AMIYA.co.jp fredericks	2014-04-11 10:25:13

POINT!



Unnecessary files take up valuable disk space and slow your systems. Create a report to show old/unused/unnecessary files on a per-department basis.

■ Large Files

Domain Name	Machine Name	Folder Name	Owner	Size
AMIYA.co.jp	AFile_Server	c: EngineeringDept ProdABC Support	AMIYA.co.jp Jones	702,538,435
AMIYA.co.jp	BFile_Server	c: SalesDept ImagesforProposal	AMIYA.co.jp Lyle	432,008,357
AMIYA.co.jp	CFile_Server	c:SalesDept private green mylovestory_video	AMIYA.co.jp Lyle	10,505,000

POINT!



Metabolic folder syndrome. Clean up unused/unnecessary graphics, duplicates, and excessively large files.

Duplicated Files

Domain Name	Machine Name	Folder Name	File Name	Size	Duplicate group number
AMIYA.co.jp	Sales_Server	c: MarketingDept Materials summarymaterial.ppt	summarymaterial.ppt	778240	1
AMIYA.co.jp	Sales_Server	c: DeptShared summarymaterial_copy.ppt	summarymaterial_copy.ppt	778240	1

POINT!



Recognize duplicates by size and hash value, even when file names are different.

Unused Accounts

Domain Name	User Name	Admin Rights	Most-Recent Logon
AMIYA.co.jp	John	no	2016-03-31 18:20:33
AMIYA.co.jp	Aproject2015	yes	2015-03-10 18:25:51
AMIYA.co.jp	Mr.White	no	2015-7-28 10:13:20

POINT!



Unnecessary user ID/temporary group ID left behind? Inactivate or delete before they can be used against you.

Closed project

Account of the retired employee

To complete settings, only check the requiring information. Create effective reports easily.

Check the box of information you want to output

Resource Athlete.

Output the report

New query addition wizard

Select query to run

- Select from template
- Select from category
 - User query
 - Group query
 - Folder query**
 - Shared query
 - System configuration query
 - Application query
 - Service query
 - Process query

Folder query
Obtain information of specified folder and the subfolders

Output	Field	Filter	Description
<input checked="" type="checkbox"/>	Domain name		If not a member of dom
<input checked="" type="checkbox"/>	Machine name		
<input checked="" type="checkbox"/>	Full path		
<input checked="" type="checkbox"/>	Folder name		
<input checked="" type="checkbox"/>	Hierarchy		
<input checked="" type="checkbox"/>	Owner		
<input type="checkbox"/>	Last date accessed		
<input checked="" type="checkbox"/>	Date created		
<input checked="" type="checkbox"/>	Number of files		
<input checked="" type="checkbox"/>	Number of folders		
<input checked="" type="checkbox"/>	Size		

Buttons: Select all, Clear all, Option, Reset, < Back, Next >, Cancel

ALog

Folder query

query execution date: 10/20/2017 9:18:13 AM Printed on 10/20/2017 10:11:12 AM

Domain name	Machine name	Full path	Folder name	Owner	Date created	Number of files	Number of folders	Size	Account	Type of Allow	Apply To
Demo.Amyia	192.168.1.84	c:\Program Files\Microsoft\...	NT SERVICE\TrustedInstaller	NT SERVICE\TrustedInstaller	8/22/2013 10:31:02 PM	718	2	518151	SYSTEM DEMO.AMYIA\Administrators DEMO.AMYIA\Users DEMO.AMYIA\Users CREATOR OWNER	Full Control Read & execute Create folders and files Append data Create files/write Full Control	This folder, subfolders and files This folder, subfolders and files This folder, subfolders and files This folder and subfolders Subfolders only
Demo.Amyia	192.168.1.84	c:\\$Recycle.Bin	RECYCLE.BIN	NT AUTHORITY\SYSTEM	8/23/2013 12:39:31 AM	0	1	0	DEMO.AMYIA\Users DEMO.AMYIA\Administrators SYSTEM	Special Full Control Full Control	This folder only This folder, subfolders and files This folder, subfolders and files

Get Automated Report daily, weekly, or monthly basis. Automated Output with PDF, CSV, and TSV format.

1. Select Frequency

Resource Athlete

New query addition wizard

Task schedule configuration

Set task schedule

Task status: Enable Disable

Schedule type: **Daily** (dropdown menu open showing: Repeatedly, Daily, Weekly, Monthly, Only once)

Start time: 1:00 AM

< Back Next > Cancel

Automate

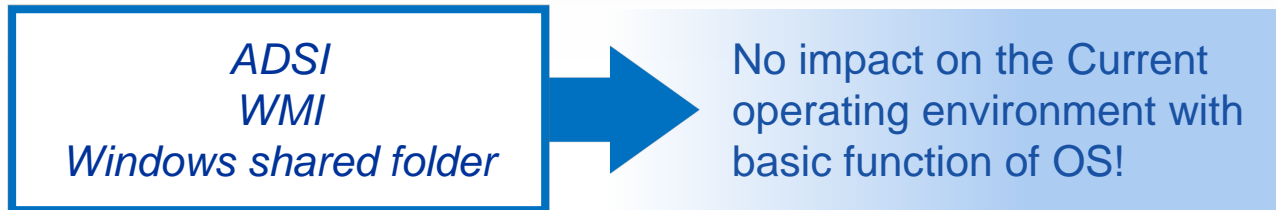
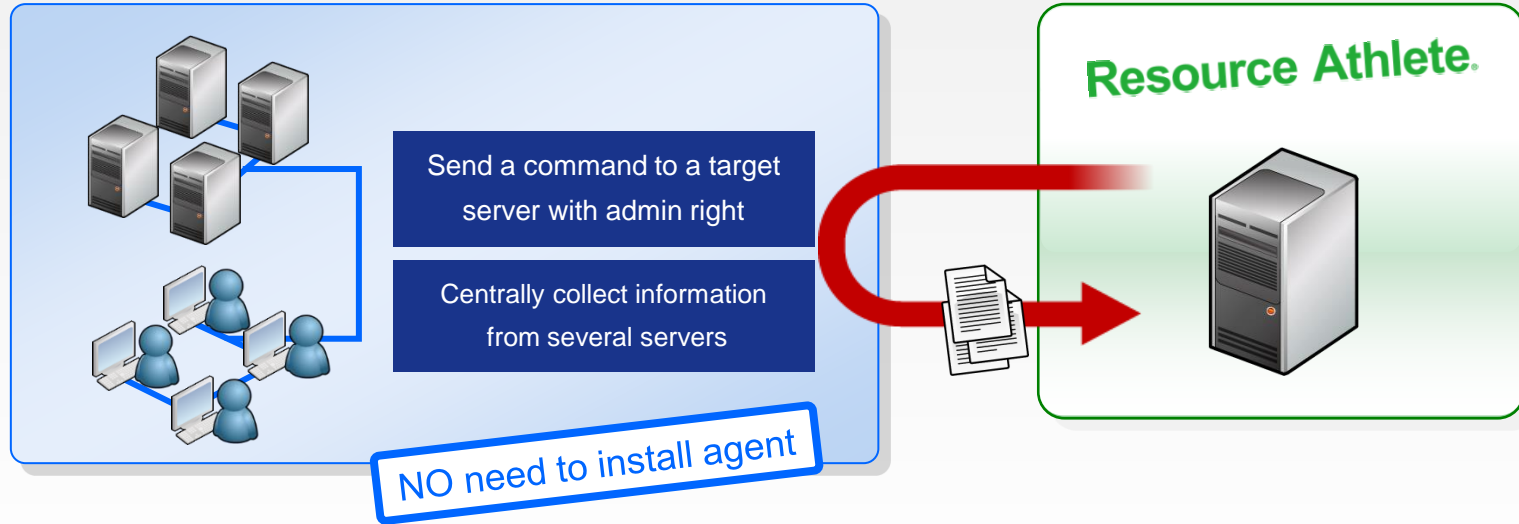
2. Create Automatic Reports

Folder query (10/20/2017 9:16:13 AM)

No.	Domain name	Machine name	Full path	Folder name	Hierarchy
1	Demo.Amya	192.168.1.84	c:\\$Recycle.Bin	\$Recycle.Bin	1
2	Demo.Amya	192.168.1.84	c:\\$Recycle.Bin\S-1-5-21-4106270447-1358163943-217255047-500	S-1-5-21-4106270447-1358163943-217255047-500	2
3	Demo.Amya	192.168.1.84	c:\\$Recycle.Bin\S-1-5-21-4106270447-1358163943-217255047-500	S-1-5-21-4106270447-1358163943-217255047-500	2
4	Demo.Amya	192.168.1.84	c:\\$Logase		

PDF / CSV / TSV formats

No agent is required to run on either Client PC or the server.



Manager Server

OS: Windows Server 2008 / 2008 R2
Windows Server 2012 / 2012 R2
Windows Server 2016

*Service pack of each OS(SP)is supported

*Each edition of (Standard / Enterprise / Datacenter) supported

*Virtualized environment (VMWare, Hyper-V, Citrix XenServer)supported.

CPU: Dual Core, or higher (Quad Core or above is recommended)

Memory: 4GB or better (8GB recommended)

HDD: 100GBor higher disk space.

*There is a case that more disk space is required depending on the number of the target server and access log storing term.

Software: .NET Framework 4.5 or better

Target Machines

■ **Windows** Windows Server 2008 / 2008 R2
Windows Server 2012 / 2012 R2
Windows Server 2016
Windows Storage Server 2008 / 2008 R2
Windows Storage Server 2012 / 2012 R2
Windows Storage Server 2016
Windows 7 / 8.1 / 10 *1

*Service pack of each OS(SP)is supported

*Each edition of (Standard / Enterprise / Datacenter) supported

*Virtualized environment (VMWare, Hyper-V, Citrix XenServer)supported.

■ **NetApp** Data ONTAP、clustered Data ONTAP *2

■ **EMC** VNX OE、VNXe OE、Unity *2

■ **Isilon** OneFS *2

■ **VFP** Hitachi Virtual File Platform 4.1.2-01 or better *2

*1 Compatible only with inventory (asset) information query

*2 Compatible only with folder/file/shared resource information query for CIFS region